



● Thank you for purchasing **KOSO DIGITAL LCD meter**. Before installing, please check the instruction carefully.

⚠ Notice

1. The LCD meter is apply for DC 12V.
2. For installation, please follow the steps described in manual. Any damage caused by wrong installation shall be imputed to the users.
3. To avoid the short circuit, please don't pull the wire when installing. Don't break or modify the wire terminal.
4. Do not disassemble or change any parts excluding the manual description.
5. The interior examination or maintenance should be executed by our professionals.

MARK MEANING:

NOTE You could get the installation details from the information behind the mark.

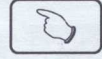
⚠ Some processes must be followed to avoid the affection acused by wrong installation.

⚠ **WARNING!** Some processes must be followed to avoid damages to yourself or the public.

⚠ **CAUTION!** Some processes must be followed to avoid the damage to the vehicle.



FLASH

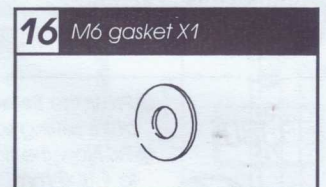
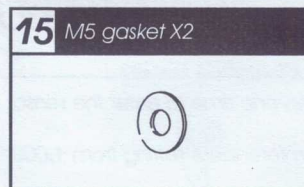
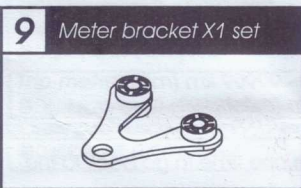
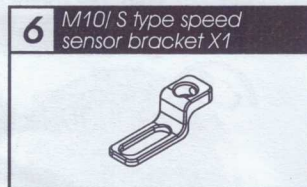
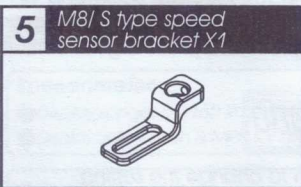
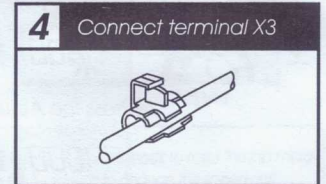
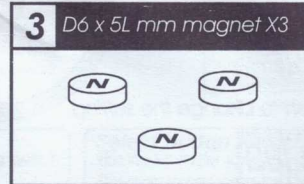
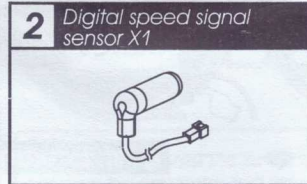
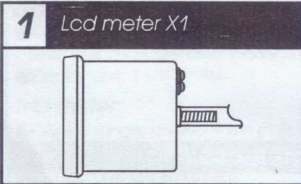


PRESS THE
BUTTON ONE TIME



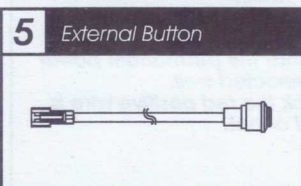
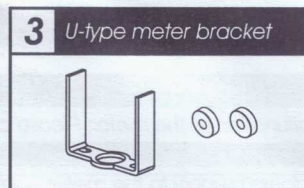
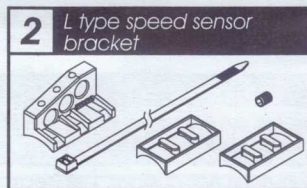
PRESS THE
BUTTON 3
SECONDS

1-1 Accessory



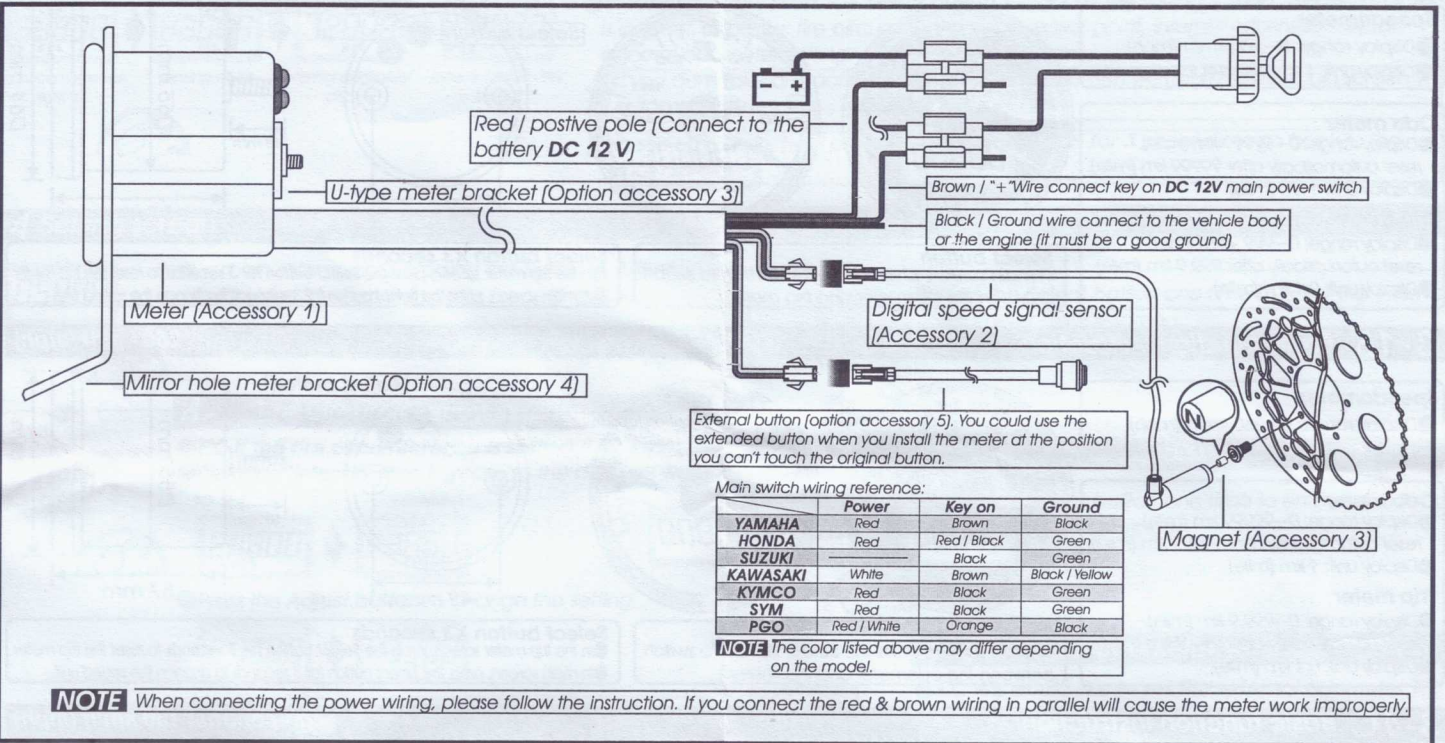
NOTE Please contact the local distributor if the items you open are not the same, with the above-listed one.

1-2 Option accessory

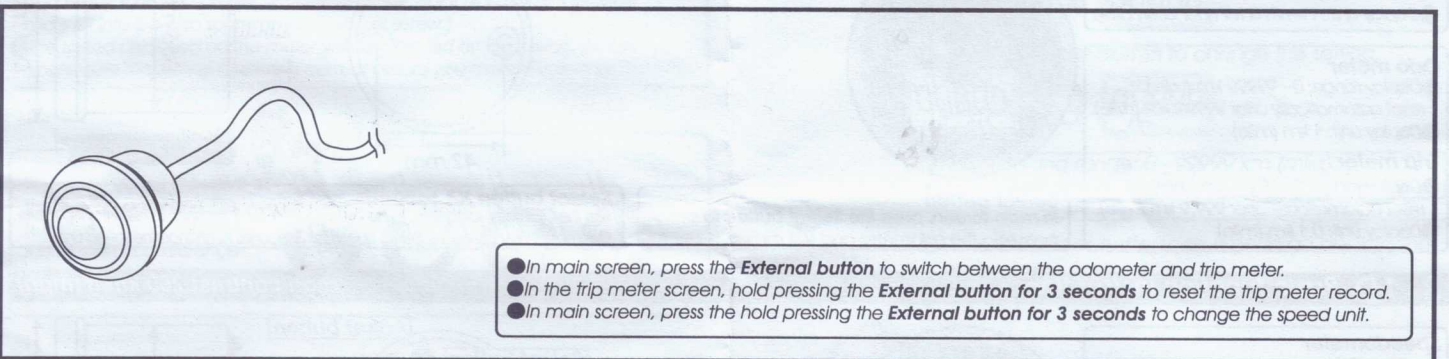


NOTE Some of the option accessories may not sell. For the details, please contact the local distributor.

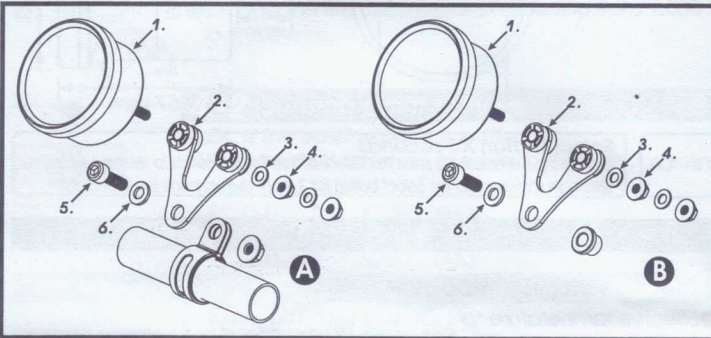
2-1 Wiring installation instructions



2-2 External Button function instructions (Option accessory 5)



2-3 Installation instructions



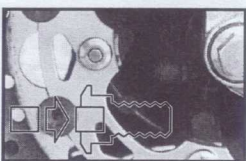
When installing, please follow the process.

1. Lcd meter (Accessory 1)
2. Meter bracket (Accessory 9)
3. M5 washer X2 (Accessory 15)
4. M5 X P0.8 nut X2 (Accessory 13)
5. M6 X P1.0 screw (Accessory 12)
6. M6 washer (Accessory 16)

A Use the meter bracket (Accessory 9), handle bar clamp (Accessory 10), rubber (Accessory 11) and the nut to install the speedometer on the handle bar.

B Use the aluminum bush (Accessory 17) to install the speedometer on the handle bar stem.

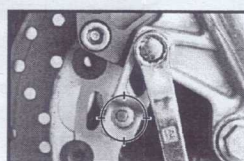
2-4 Installation instructions



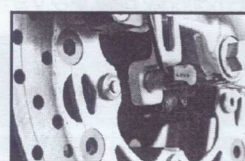
Put the magnet into the brake disc screw hole.



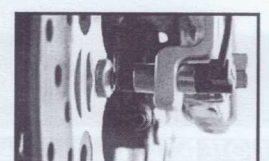
Install the S type sensor bracket.



Adjust the sensor bracket position to make sure that the sensor could face the magnet to prevent bad speed signal or no signal!



Install the speed sensor on the bracket.



Adjust the distance between sensor and magnet. We suggest you to make sure the distance is under 2mm for catching good speed signal.

3-1A Basic function instruction

160 km/h (mph)

Speedometer

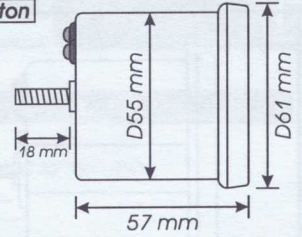
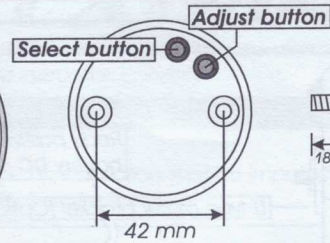
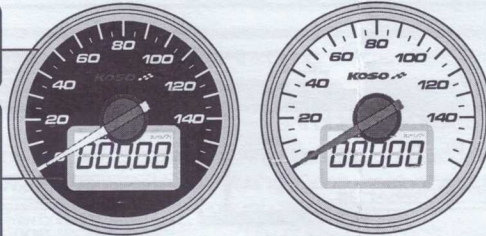
- Display range: 0~160 km/h (mph)
- Display unit: 1 km/h & MPH for alternative

Odo meter

- Display range: 0~99999 km (mile), reset automatically after 99999 km (mile).
- Display unit: 1 km (mile)

Trip meter

- Display range: 0~999.9 km (mile), reset automatically after 999.9 km (mile).
- Display unit: 0.1 km (mile)



Select button

In main screen, press the **Select button** to switch between the odometer and trip meter.

Select button X3 seconds

- In the trip meter screen, press the **Select button** for 3 seconds to reset the trip meter.
- In main screen, press the **Select button** for 3 seconds to change the speed unit.

3-1B Basic function instruction

260 km/h (mph)

Speedometer

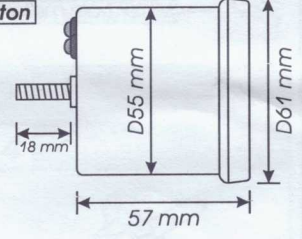
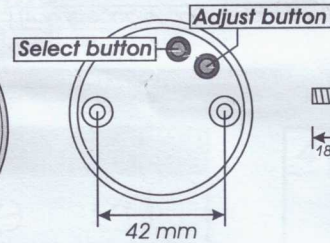
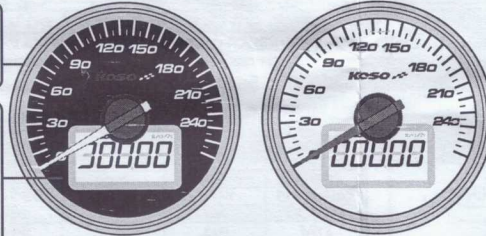
- Display range: 0~260 km/h (mph)
- Display unit: 1 km/h & MPH for alternative

Odo meter

- Display range: 0~99999 km (mile), reset automatically after 99999 km (mile).
- Display unit: 1 km (mile)

Trip meter

- Display range: 0~999.9 km (mile), reset automatically after 999.9 km (mile).
- Display unit: 0.1 km (mile)



Select button

In main screen, press the **Select button** to switch between the odometer and trip meter.

Select button X3 seconds

- In the trip meter screen, press the **Select button** for 3 seconds to reset the trip meter.
- In main screen, press the **Select button** for 3 seconds to change the speed unit.

3-1C Basic function instruction

High-contrast 160 km/h (mph)

Speedometer

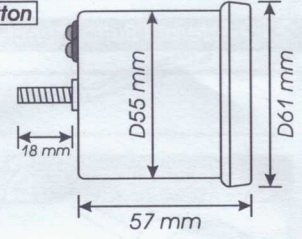
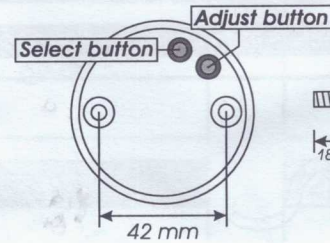
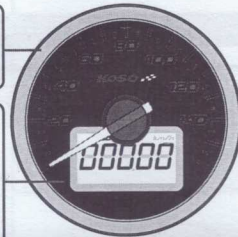
- Display range: 0~160 km/h (mph)
- Display unit: 1 km/h & MPH for alternative

Odo meter

- Display range: 0~99999 km (mile), reset automatically after 99999 km (mile).
- Display unit: 1 km (mile)

Trip meter

- Display range: 0~999.9 km (mile), reset automatically after 999.9 km (mile).
- Display unit: 0.1 km (mile)



Select button

In main screen, press the **Select button** to switch between the odometer and trip meter.

Select button X3 seconds

- In the trip meter screen, press the **Select button** for 3 seconds to reset the trip meter.
- In main screen, press the **Select button** for 3 seconds to change the speed unit.

3-1D Basic function instruction

High-contrast 260 km/h (mph)

Speedometer

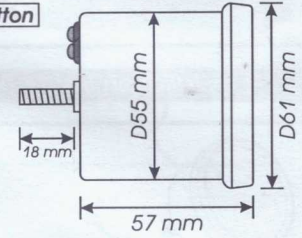
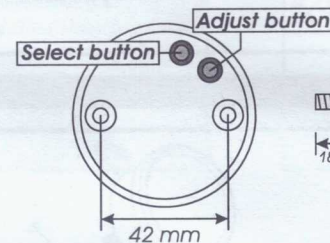
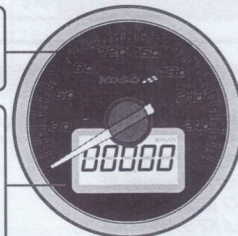
- Display range: 0~260 km/h (mph)
- Display unit: 1 km/h & MPH for alternative

Odo meter

- Display range: 0~99999 km (mile), reset automatically after 99999 km (mile).
- Display unit: 1 km (mile)

Trip meter

- Display range: 0~999.9 km (mile), reset automatically after 999.9 km (mile).
- Display unit: 0.1 km (mile)



Select button

In main screen, press the **Select button** to switch between the odometer and trip meter.

Select button X3 seconds

- In the trip meter screen, press the **Select button** for 3 seconds to reset the trip meter.
- In main screen, press the **Select button** for 3 seconds to change the speed unit.

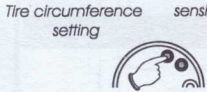
3-2 Function, setting instruction

| | |
|----------------------|--|
| ○ Odometer | Display range: 0~99999 km, reset automatically after 99999 km (mile) Display unit: 1 km (mile) |
| ○ Trip meter | Display range: 0~999.9 km (mile), reset automatically after 999.9 km (mile) Display unit: 0.1 km (mile) |
| ○ Tire circumference | Display range: 300~2,500 mm Display unit: 1 mm ; Sensor point: 1~20 |

| | |
|-------------------------------|---------------|
| ● Effective voltage | DC 12 V |
| ● Effective temperature range | -10~+60°C |
| ● Meter standard | JIS D 0203 S2 |
| ● Meter size | D55 X 57 mm |
| ● Meter weight | Around 190 g |

NOTE Design and specification are subject to change without notice!

3-3 Setting screen instruction



● In setting screen, press the **Select** button to choose the setting screen. The setting screen is in order as below: tire circumference and sensor point, internal odometer display, external odometer setting.

⚠ If you don't take any action in **30** seconds, the screen will return to the main screen automatically.

⚠ In setting screen, hold pressing the **Select** button for **3** seconds to go back to the main screen.

4 Setting screen



● In main screen, hold pressing the **Select + Adjust** button for **3** seconds to enter the setting screen.



4-1 Tire circumference setting



● EX. If the tire circumference is setting **1,300** mm.
● Press the **Select** button to move to the digit you want to set.



● Press the **Adjust** button to change the setting.



NOTE Setting range: 300~2,500 mm
Setting unit: 1 mm

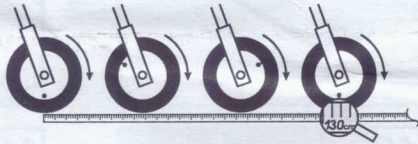
CAUTION!

- Please measure the tire circumference (The tire you will install the sensor on) and make sure the number of magnet sensor point (You could install the magnet into the disc screw or the sprocket screw.)
- The speed displayed on the meter will be affected by the setting, please make sure the setting number is correct before you make the setting.

P.S.



You could define the valve as the starting point and the terminal point to measure the wheel circumference with a measuring tape.



● Press the **Select** button one time to enter the sensor point setting screen.
● EX. Now the tire circumference is setting from 1,000 to 1,300 mm.



4-2 Sensing point setting



● EX. If the sensing point is setting **6**.
● Press the **Select** button to move to the digit you want to set.



● Press the **Adjust** button to change the setting.



NOTE Setting range: 1~20P
Setting unit: 1P



● Press the **Select** button one time to enter the internal odometer display screen.

● EX. Now the sensing point is setting from 01P to 06P.



4-3 Internal odometer display



● Press the **Select** button one time to enter the external odometer setting screen.



4-4 External odometer setting



● EX. We would like to set the external odometer to **5,000** km.

● Press the **Select** button to move to the digit you want to set.



● Press the **Adjust** button to change the setting.



NOTE Setting range: 0~99999 km (mile)
Setting unit: 1 km (mile)



● Press the **Select** button one time to go back to the main screen.

● EX. The external odometer is setting 5,000 km (mile).



● Main screen.

5 Trouble shooting

The following situation do not indicate malfunction of the meter. Please check the following before taking it in for repair.

| Trouble | Check item | Trouble | Check item |
|--|---|--|--|
| The meter doesn't work when the power is on. | <ul style="list-style-type: none"> ● The power doesn't supply to the meter. → Please make sure the wiring is connected. The wiring and fuse are not broken. → The battery is broken or the battery is too old to supply enough power (DC 12V) to make the meter work. | Speed does not appear or appear incorrectly. | <ul style="list-style-type: none"> ● Please make sure the speed sensor is connected correctly. ● Please check the tire-size setting. → Please refer to the manual 4-1. |
| The meter shows wrong information. | <ul style="list-style-type: none"> ● Please check the voltage of your battery, and make sure the voltage is over DC 12V. | When switch off, the needle doesn't return to 0. | <ul style="list-style-type: none"> ● It is possible that the permanent power wire is not connected well. → Please check the red positive wire is connected well or not. |

※ If still can't solve the problems according to the steps above, please contact with distributors or us.