

Thank you for purchasing "KOSO LCD meter". Before installing, please check the instruction carefully.

**Notice**

1. The lcd meter is apply for **DC 12V**.
2. For installation, please follow the steps described in manual. Any damage caused by wrong installation shall be imputed to the users.
3. To avoid the short circuit, please don't pull the wire when installing. Don't break or modify the wire terminal.
4. Do not disassemble or change any parts excluding the manual description.
5. The interior examination or maintenance should be executed by our professionals.

**MARK MEANING:**

**NOTE** You could get the installation details from the information behind the mark.

**△** Some processes must be followed to avoid the affection caused by wrong installation.

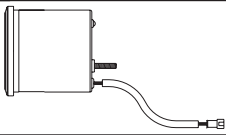
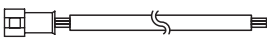
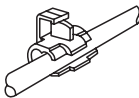
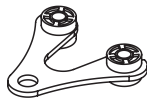


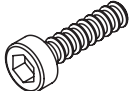




**△ WARNING!** Some processes must be followed to avoid damages to yourself or the public.

**△ CAUTION!** Some processes must be followed to avoid the damage to the vehicle.



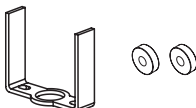
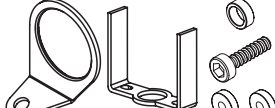
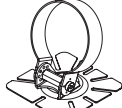
PRESS THE  
BUTTON 3  
SECONDS

**1-1 Accessory**

<p><b>1</b> Lcd meter X 1</p> 	<p><b>2</b> Meter main wire set X 1</p> 	<p><b>3</b> Connect terminal X 3</p> 	<p><b>4</b> Meter bracket X 1</p> 
<p><b>5</b> Handle bar bracket X 1</p> 	<p><b>6</b> Rubber X 1</p> 	<p><b>7</b> M6 X P1.0 screw X 1</p> 	<p><b>8</b> M5 X P0.8 nut X 2 M6 X P1.0 nut X 1</p> 
<p><b>9</b> M5 gasket X 2 M6 gasket X 1</p> 	<p><b>10</b> Aluminum bush X 1</p> 	<p><b>11</b> Manual</p> 	

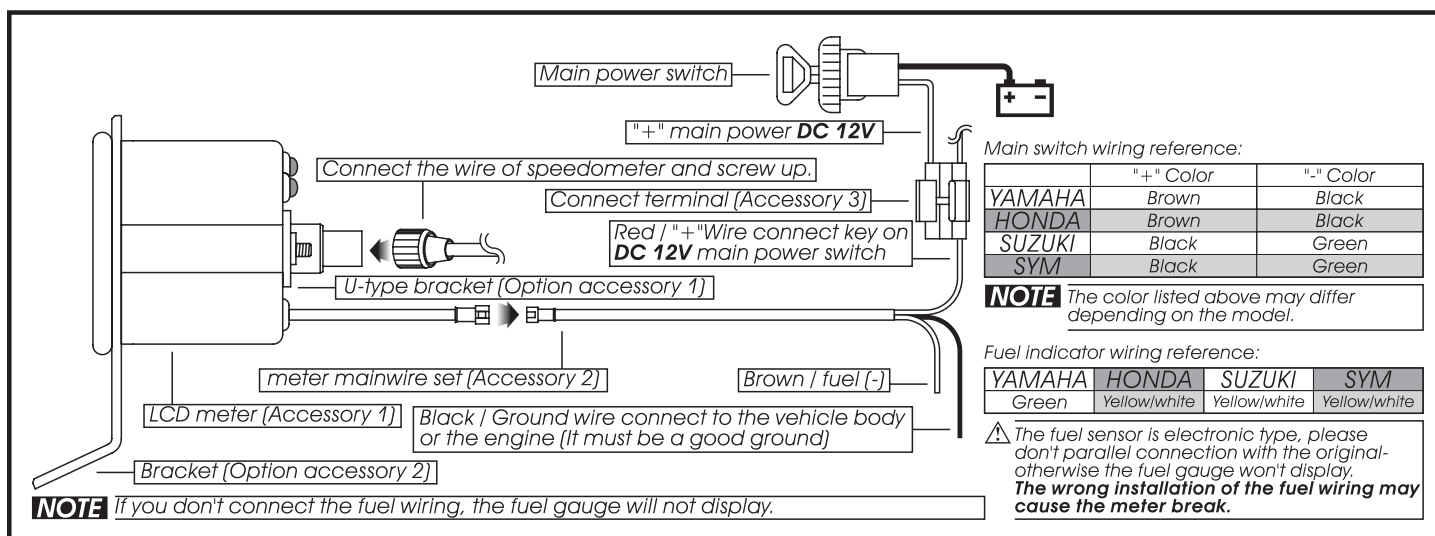
**NOTE** Please contact the local distributor if the items you open are not the same, with the above-listed one.

**1-2 Option accessory**

<p><b>1</b> U-type meter bracket</p> 	<p><b>2</b> Mirror hole meter bracket</p> 	<p><b>3</b> Universal adhesive bracket</p> 
--------------------------------------------------------------------------------------------------------------------------	-------------------------------------------------------------------------------------------------------------------------------	---------------------------------------------------------------------------------------------------------------------------------

**NOTE** Some of the option accessories may not sell. For the details, please contact the local distributor.

**2-1 Wiring installation instructions**



Main switch wiring reference:

	"+" Color	"-" Color
YAMAHA	Brown	Black
HONDA	Brown	Black
SUZUKI	Black	Green
SYM	Black	Green

**NOTE** The color listed above may differ depending on the model.

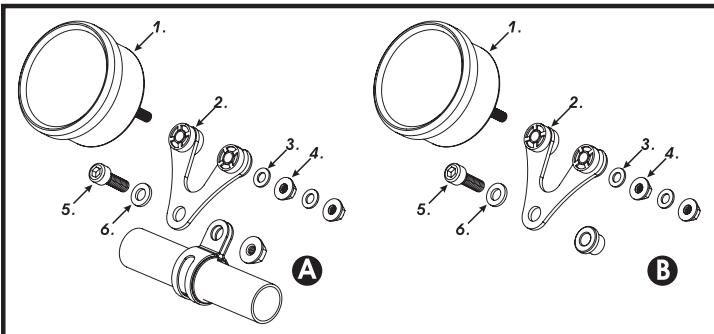
Fuel indicator wiring reference:

YAMAHA	HONDA	SUZUKI	SYM
Green	Yellow/white	Yellow/white	Yellow/white

**△** The fuel sensor is electronic type, please don't parallel connection with the original otherwise the fuel gauge won't display.  
**The wrong installation of the fuel wiring may cause the meter break.**

**NOTE** If you don't connect the fuel wiring, the fuel gauge will not display.

## 2-2 Installation instructions



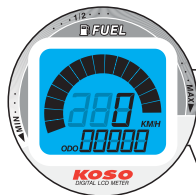
When installing, please follow the process.

1. Lcd meter (accessory 1)
2. Meter bracket (accessory 4)
3. M5 gasket X 2 (accessory 9)
4. M5 X P0.8 nut X 2 (accessory 8)
5. M6 X P1.0 screw (accessory 7)
6. M6 gasket (accessory 9)

**A** Use the meter bracket (accessory 4), handle bar bracket (accessory 5), rubber (accessory 6) and the nut to install the speedometer on the handle bar.

**B** Use the aluminum bush (accessory 10) to install the speedometer on the handle bar stem.

## 3 Instruction of function



● **Fuel indicator:**  
begin to flash if 3 grids left.

● **Speedometer**

● Display range: 0~360 km/h.

● Display unit: km.

● **Odo meter**

● Display range: 0~99999 km, reset automatically after 99999 km.

● Display unit: 1 km.

● **Fuel resistance setting**

100 Ω · 510 Ω

● **Voltage** DC 12V

● **Transient voltage protection**

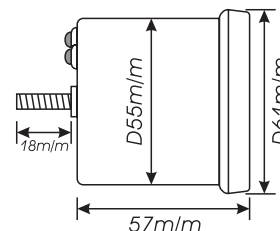
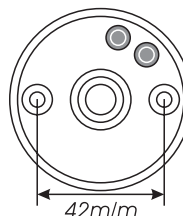
DC40V

● **Speed** JIS D 5608

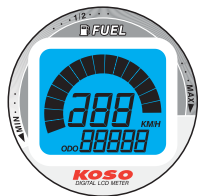
● **Anti-miscellany** 30DB

● **Temp range** -10~+60°C

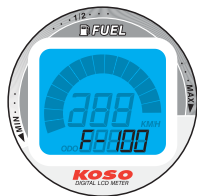
● **Specification** JIS D 0203



## 4 The fuel gauge resistance setting

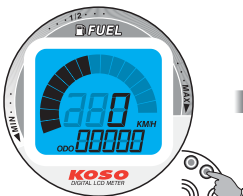


Auto-check scree 1.

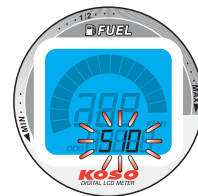


Auto-check scree 2.

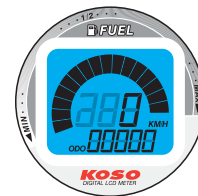
**NOTE**  
F-100 means the resistance setting of fuel gauge is 100 Ω new.



In main screen, press down the button for 3 seconds to change the resistance setting of fuel gauge.



△ New the new setting 510 Ω will flash 3 times, and then return to the main screen.



Now it's in the main screen.