



# INSTRUCTION



Thank you for purchasing KOSO RX2+ GP style meter , before operating the unit, please read the instruction thoroughly and retain it for the future reference.

## Notice

- 1.The lcd meter is apply for DC 12V.
- 2.For installation, please follow the steps described in manual. Any damage caused by wrong installation shall be imputed to the users.
- 3.Don't break or modify the wire terminal. To avoid the short circuit, please don't pull the wire when installing.
- 4.Do not disassemble or change any parts excluding the manual description.
- 5.The interior examination or maintenance should be executed by our professionals.

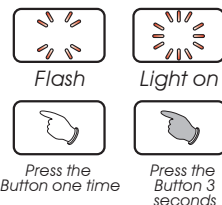
## MARK MEANING:

**NOTE** You could get the installation details from the information behind the mark.

△ Some processes must be followed to avoid the affection caused by wrong installation.

**WARNING!** Some processes must be followed to avoid damages to yourself or the public.

**CAUTION!** Some processes must be followed to avoid the damage to the vehicle.



## 1-1 Accessory

**1** Meter X 1

**2** Main wiring X 1

**3** RPM WIRE (TYPE A) X 1

**4** RPM WIRE (TYPE B) X 1

**5** Temp sensor wire X 2

**6** PT1/8 water temp sensor X 2

**7** Passive speed sensor X 1

**8** D6 X 5L mm magnet X 6

**9** Connect terminal X 11

**10** M8 / S type speed sensor bracket X 1

**11** M10 / S type speed sensor bracket X 1

**12** M5 X 5L mm hexagonal bolt X 2

**13** 2.5 mm spanner X 1

**14** 3 mm spanner X 1

**15** Meter bracket X 1

**16** M5 screw X 3

**17** M5 gasket X 3

**18** M6 X 35L screw X 2

**19** M8 X 30L screw X 2

**20** M6 screw X 2

**21** M8 screw X 2

**22** M6 gasket X 2

**23** M8 gasket X 2

**NOTE** Please contact the local distributor if the items you open are not the same, with the above-listed one.

## 1-2 Option accessory

**1** Disc magnet screw  
5/16-18 X 22.1L  
M5 X P0.8 X 12L  
M6 X P1.0 X 12.6L  
M6 X P1.0 X 19.7L  
M6 X P1.0 X 24L  
M8 X P1.25 X 22.5L M8 X P1.25 X 27.5L  
M8 X P1.25 X 29L M10 X P1.25 X 28.3L

**2** Active speed sensor

**3** Digital speed signal sensor  
JIS TYPE α

**4** Digital speed signal sensor  
JIS TYPE A

**5** Digital speed signal sensor  
RUNNER

**6** Digital speed signal sensor  
SR X-FIGHT BOOSTER

**7** L type speed sensor bracket

**8** Oil temp sensor adapter  
M12 X P1.5 X 15L  
M14 X P1.25 X 15L  
M14 X P1.5 X 15L  
M16 X P1.5 X 15L  
M18 X P1.5 X 15L  
M20 X P1.0 X 15L  
M20 X P1.5 X 15L

**9** Water temp sensor adapter  
M14  
M16.M18  
M22.M26 mm

**10** Cylinder head temp sensor  
M10.  
M14 mm

**11** Temp sensor  
M10 X P1.0  
M12 X P1.5  
M14 X P1.25  
M14 X P1.5  
M16 X P1.5 / M18 X P1.5

**12** Temp sensor wire set (2 M)

**NOTE** Some of the option accessories may not sell. For the details, please contact the local distributor.

## 2-1 Wiring installation instructions

Gray / OIL light (-)  
Purple / EOBd light (-)  
Green / fuel (-)  
Yellow / High beam light (+12V)  
Orange / L turn signal (+12V)  
Blue / R turn signal (+12V)  
White / Neutral light (-)  
Red / Positive pole (Connect to the battery DC 12V)  
Brown / "+" Wire connect key on DC 12V main power switch  
Black / Ground wire connect to the vehicle body or the engine (It must be a good ground)

Main wiring (Accessory 2)  
Meter (Accessory 1)

Brown / RPM wire please connect it to the suitable position according to the models.

Oil temperature  
temp sensor wire (Accessory 5)  
PT1/8 (Accessory 6) Please install the temp sensor to the position you want to measure.

Water temperature  
Digital speed signal sensor (Accessory 7)  
Magnet (Accessory 8)

Main switch wiring reference:

	Power	Key on	Ground
YAMAHA	Red	Brown	Black
HONDA	Red	Red / Black	Green
SUZUKI	Red	Black	Green
KAWASAKI	White	Brown	Black / Yellow
KYMC	Red	Black	Green
SYM	Red	Black	Green
PGO	Red / White	Orange	Black

**NOTE** The color listed above may differ depending on the model.

RPM wiring reference:

	Power	Key on	Ground
YAMAHA	Yellow / Black	BUELL	Pink
HONDA	Yellow / Green	CAGIVA	Gray / Green
SUZUKI	Yellow / Blue	DUCATI	Gray / Green
KAWASAKI	Light Blue	H-D	Pink
APRILIA	Gray / Violet	MV	Gray / Yellow
BMW	Black	TRIUMPH	Red
BENELLI	Gray / Violet		

**NOTE** The color listed above may differ depending on the model.

Fuel indicator wiring reference:

	Power	Key on	Ground
YAMAHA	Green	KYMC	Yellow / White
HONDA	Yellow / White	SYM	Yellow / White
SUZUKI	Yellow / White	PGO	Gray
KAWASAKI	Black / L Green		

△ The fuel sensor is electronic type, please don't parallel connection with the original- otherwise the fuel gauge won't display.  
The wrong installation of the fuel wiring may cause the meter break.

RPM WIRE SET-TYPE A (ACCESSORY 3)  
RPM WIRE SET-TYPE B (ACCESSORY 4)  
Ignition coil positive  
Flywheel  
Ignition pulse  
pick up  
Tachometer  
EMS CDI  
Coil  
Spark plug wire  
Spark  
Spark plug cap

A. Please wrap the RPM wire at least 5 times around the spark plug.  
A1. Please use tape to fix the RPM (Type A) wire onto the spark plug wire.  
A2. Please use tape to fix the RPM wire (Type A) on the spark plug cap.  
A3. Please use tape to fix the RPM wire (Type A) on the coil positive pole wire. For some models with the coil negative wire, please tape the RPM wire (Type A) on the negative wire to get the RPM signal. (For example, the YAMAHA V-max 1200)  
B. Please connect the RPM wire (Type B) to connect to the ignition coil positive pole.  
B1. Please wrap the RPM wire (Type B) on the spark plug wire by connecting the male and female connector.  
C. Please connect the RPM wire (Type A) to the pick up.  
D. Please parallel the RPM wire (Type A) with the original tachometer signal wire (This method is available only when the original speedometer comes with a tachometer on it. You could get the RPM wire information from the service manual of your bikes.)  
E. For the models comes with the new ignition coil, please wrap the RPM wire (Type A) at least 5 times around the spark plug as the above drawing.

**NOTE** The temperature will disappear if you don't install & connect the temperature sensor with the meter.

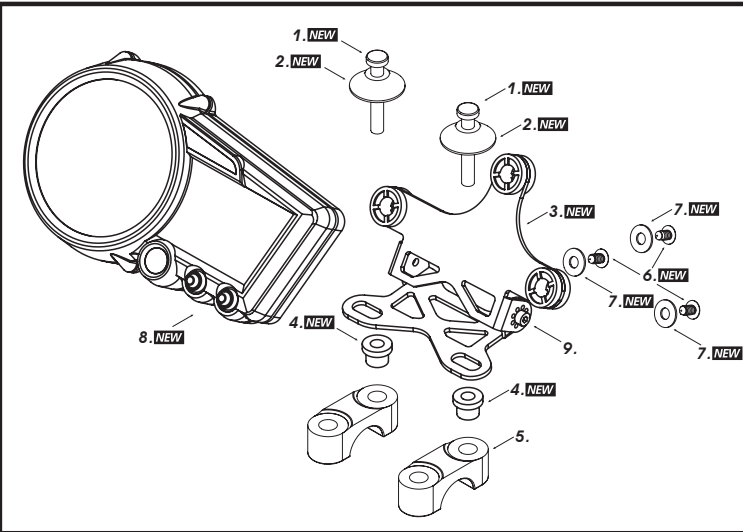
**NOTE** When connecting the power wiring, please follow the instruction. If you connect the red & brown wiring in parallel will cause the meter work improperly.

△ The RPM wire installation  
A. Please wrap the RPM wire at least 5 times around the spark plug.  
A1. Please use tape to fix the RPM (Type A) wire onto the spark plug wire.  
A2. Please use tape to fix the RPM wire (Type A) on the spark plug cap.  
A3. Please use tape to fix the RPM wire (Type A) on the coil positive pole wire. For some models with the coil negative wire, please tape the RPM wire (Type A) on the negative wire to get the RPM signal. (For example, the YAMAHA V-max 1200)  
B. Please connect the RPM wire (Type B) to connect to the ignition coil positive pole.  
B1. Please wrap the RPM wire (Type B) on the spark plug wire by connecting the male and female connector.  
C. Please connect the RPM wire (Type A) to the pick up.  
D. Please parallel the RPM wire (Type A) with the original tachometer signal wire (This method is available only when the original speedometer comes with a tachometer on it. You could get the RPM wire information from the service manual of your bikes.)  
E. For the models comes with the new ignition coil, please wrap the RPM wire (Type A) at least 5 times around the spark plug as the above drawing.

For multi-ignition models, we will suggest you to get the signal on the first ignition.  
The best signal source will be in order as D>C>B>A, we will suggest you to check different ways if you have problems to get the RPM signal.



2-2 Installation instructions



When installing, please follow the process

- 1.M6 or M8 screw X 2 (Accessory 18.19)
- 2.M6 or M8 aluminum screw bush X 2 (Accessory 20.21)
- 3.Bracket (Accessory 15)
- 4.M6 or M8 gasket X 2 (Accessory 22.23)
- 5.Handle bar bracket

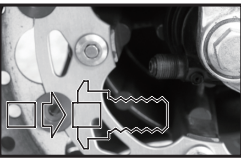
**NOTE** You could also install it (meter bracket) on the original meter bracket.

- 6.M5 screw X 3 (Accessory 16)
- 7.M5 gasket X 3 (Accessory 17)
- 8.Meter (Accessory 1)
- 9.Meter bracket micro-adjustment screw

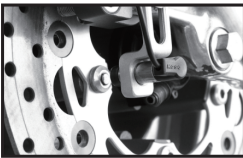
**NOTE** You could choose the angle first and then use the screw to fix the angle.

**NOTE** The handle bar bracket screw and screw hole will differ depending on different model. We suggest you to use the additional assembly (item 1.2.4) to fit it.

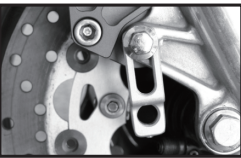
MOTO / SCOOTER S type speed sensor bracket instruction



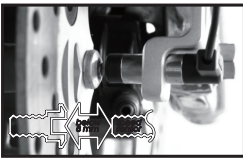
Put the magnet into the brake disc screw hole.



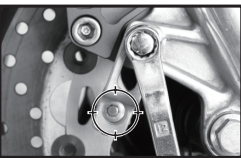
Install the speed sensor on the bracket.



Install the s type sensor bracket.

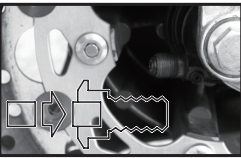


Adjust the distance between sensor and magnet. We suggest you to make sure the distance is under **8 mm** for catching good speed signal.

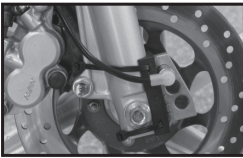


Adjust the sensor bracket position to make sure that the sensor could face the magnet to prevent bad speed signal or no signal!!

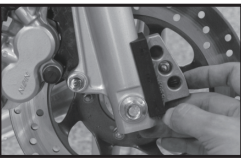
MOTO / SCOOTER L type speed sensor bracket instruction



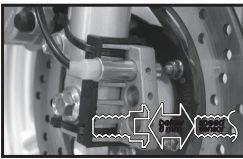
Put the magnet into the brake disc screw hole.



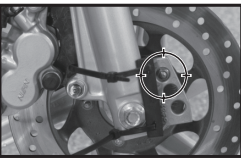
Install the speed sensor on the bracket.



Please install the L bracket and the anti-slip rubber on the front fork and adjust it to the proper height and angle.



Adjust the distance between sensor and magnet. We suggest you to make sure the distance is under **8 mm** for catching good speed signal.

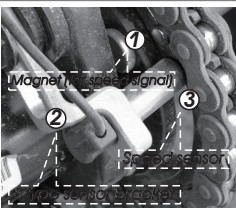


Please use the cable tie to fix the bracket on the front fork. Please make sure the disc screw could pass the hole on the bracket for you to install the sensor into the same hole for catching the speed signal.

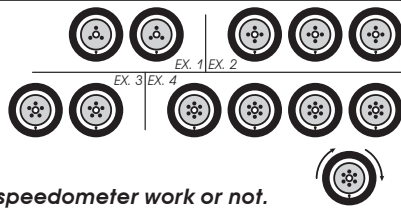
ATV S type speed sensor bracket instruction

- 1. Put the magnet into the brake disc screw hole.
- 2. Install the s type sensor bracket. Adjust the sensor bracket position to make sure that the sensor could face the magnet to prevent bad speed signal or no signal!!
- 3. Install the speed sensor on the bracket. Adjust the distance between sensor and magnet. We suggest you to make sure the distance is under **8 mm** for catching good speed signal.

**NOTE** About the setting, please refer to 4-8 tire circumference and sensor point setting.



The more magnet sensor points are, the less the display interval is. when installing the magnet, please put the magnet with **N**-mark side face the outside and put them averagely to avoid wrong signal.  
EX. 1: If your disk has 3 screws, you could install 1 or 3 magnets to catch the speed.  
EX. 2: If your disk has 4 screws, you could install 1. B2 or 4 magnets to catch the speed.  
EX. 3: If your disk has 5 screws, you could install 1 or 5 magnets to catch the speed.  
EX. 4: If your disk has 6 screws, you could install 1. B2. B3 or 6 magnets to catch the speed.  
**After finishing the magnet installation and sensor point setting, please move your tire to test the speedometer work or not.**



3-1 Basic function instruction

**Tachometer**  
●Display range: 0~15,000 RPM.  
●Display unit: 100 RPM.

**Temperature warning**  
●Setting range: 60~120°C (140~248°F)  
●Setting unit: 1°C (°F)

**Fuel symbol**  
●Display range: 10 levels.  
**Level thermometer (water temperature)**  
●Display range: 20~110°C (68~230°F), 10 levels.  
●Display unit: Each level represents 10°C (50°F)

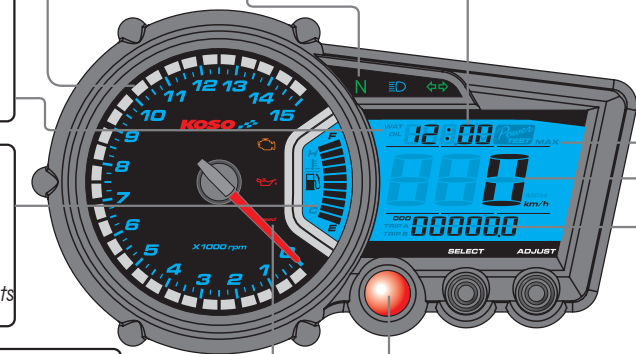
**Speeding warning light**  
●Setting range: 30~360 km/h (19~225 MPH).  
●Setting unit: 1 km/h (MPH).

**The top RPM recall indicator light**  
●The indicator light will move according to the current RPM.  
●The top RPM indicator light will show you the top RPM you reach and light on for 3 seconds.

**Indicators lights**  
●Repeater light (Green)  
●Neutral light (Green)  
●High beam light (Blue)  
●EOBD light (Amber)  
●Engine oil pressure light (Red)

**Digital thermometer (water & oil temperature)**  
●Display range: 0~120°C (32~248°F)  
●Display unit: 0.1°C (°F)  
●Display:-----°C(-----°F) if temperature sensor is not connected.

**Digital Volt meter**  
●Display range: DC 8~DC 18 V  
●Flashing warning when Voltage lower than 11.5 V or higher than 15.5 v.  
**Clock**  
●24H



**The RPM Red, Yellow shift light**  
●Setting range: 1,000~15,000 RPM  
●Setting unit: 100 RPM  
●Warning: on (F-OFF), Flash (F-ON)

**MAX record**  
The meter will record the top speed, RPM and temperature automatically.



**Speedometer**  
●Display range: 0~360 km/h (0~225 MPH)  
●Display unit: km/h (MPH) for alternative

**Odo meter**  
●Display range: 0~99999.9 km (mile), reset automatically after 99999.9 km.  
●Display unit: 0.1 km (mile).  
**Trip meter A.B**  
●Display range: 0~999.9 km (mile), reset automatically after 999.9 km.  
●Display unit: 0.1 km (mile).

3-2 Function, setting instruction

●Speedometer	Display range: 0~360 km/h (0~225 MPH) Display unit: km/h (MPH), for alternative
○Display interval	<0.5 second
○Odometer	Display range: 0~99999.9 km (mile), reset automatically after 99999.9 km (mile).
○Trip meter A/B	Display range: 0~999.9 km (mile), reset automatically after 999.9 km (mile). Display unit: 0.1 km (mile).
○Speeding warning light	Setting range: 30~360 km/h (19~225 MPH) Setting unit: 1 km/h (MPH)
○Top speed record	Display range: 0~360 km/h (0~225 MPH)
○Tire circumference	Setting range: 300~2,500 mm Setting unit: 1 mm, Sensitive point: 1~20
●Tachometer	Display range: 0~15,000 RPM Display unit: 100 RPM
○Display interval	<0.5 second
○The RPM Red, Yellow shift light	Setting range: 1,000~15,000 RPM Setting unit: 100 RPM
○Warning	Light on (F-OFF) Flash (F-ON)
○MAX RPM record	Display range: 0~15,000 RPM
●Thermometer	Display unit: °C & °F for alternative
●Digital thermometer	Display range: 0~120°C (32~248°F) (Water & oil temperature) Display unit: 0.1°C (°F)
●Level thermometer	Display range: 20~110°C (68~230°F), 10 levels (Water temperature) Display unit: Each level represents 10°C (50°F)
○Display interval	<0.5 second

○Over heat warning	Setting range: 60~120°C (140~248°F) (Water & oil temperature) Setting unit: 1°C (°F)
○Top temperature record	Display range: 0~120°C (32~248°F)
●Fuel meter	Display range: 10 levels Display unit: Each level represents 10 % Setting range: 100Ω, 250Ω, 510Ω, 1200Ω, SW
○Insufficient fuel warning	Setting range: 10~50 % Setting unit: 10 %
●Clock	24 H
●Digital Volt meter	Display range: DC 8~18 V. Flashing warning when Voltage lower than 11.5 V or higher than 15.5 v.
●Target speed timer	Setting range: 30~360 km/h (20~220 MPH) Setting unit: 5 km/h (MPH)
●Target distance timer	Setting range: 50~1,500 M (1/32~30/32 mile) Setting unit: 50 M (1/32 mile)
●Top speed timer	The record including, 1.Speed: 0~360 km/h (0~225 MPH) 2.Distance: 0~999 M (0~3,280 feet) 3.RPM: 0~15,000 RPM 4.Timer: 0~9'59"99 second.
●Effective voltage	DC12V
●Effective temperature range	-10~+60°C
●Meter standard	JIS D 0203 S2
●Meter size	184.75 X 105 X 49 mm
●Meter weight	Around 305 g
●Indicator light color	Neutral-green, High beam-blue, Repeater-green, EOBD-amber, Oil-red, Speeding-red, RPM shift light (Red, Yellow)

**NOTE** Design and specification are subject to change without notice!



### 3-3 The button function instruction

#### Press the Select button

1. In main screen, press the Select button to choose the display of clock, volt, water temperature or oil temperature.
2. In power test screen, press the Select button to choose the function you want to use.
3. In setting screen, press the Select to choose the function you want to set.
4. When the meter is off, press the Select button to wake up the clock and the perpetual calendar.

#### Hold pressing the Select button for 3 seconds

1. In power test screen, hold pressing the Select button for 3 seconds to back to the main screen.
2. In setting screen, hold pressing the Select button for 3 seconds to back to the main screen.

#### Press the Adjust button

1. In main screen, press the Adjust button to choose the display of odometer, trip A, trip B or the MAX record.
2. In power test screen, press the Adjust button to reset the record, stop the testing, or restart the test.
3. In setting screen, press the Adjust button to make the number setting. If you keep pressing down the Adjust button the setting number will increase fast.
4. When the meter is off, press the Adjust button to wake up the clock and the perpetual calendar.

#### Hold pressing the Adjust button for 3 seconds

1. In main screen, hold pressing the Adjust button for 3 seconds to reset the trip A, trip B, or the MAX record.

#### Hold pressing the Adjust button

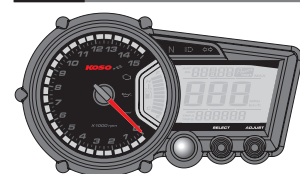
1. In setting screen, to add the setting value fast.

#### Hold pressing the Select+Adjust for 3 seconds

1. In main screen, hold pressing the Select & Adjust buttons at the same time for 3 seconds to enter the setting screen.

**CAUTION!** For safety reason - you could adjust the setting or operate the function only when the vehicle is stop.

### 3-4 Stand by function instruction



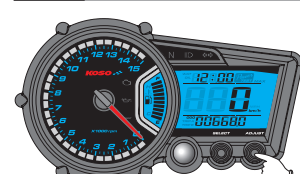
- When the meter is off, press **Adjust** or **Select** button to wake up the clock and the perpetual calendar.



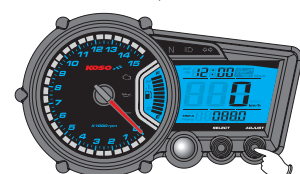
- The clock will display 30 seconds after wake up.
- If Calendar Function is set to "OFF", then only the Clock will be displayed.



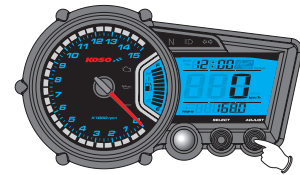
### 3-5 Main function switch instruction(Adjust button)



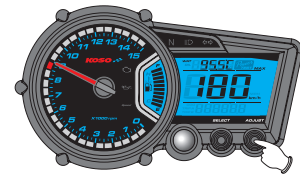
- In main screen (ODO). Press the **Adjust** button one time to enter the Trip A screen.



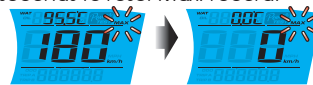
- In Trip A screen. Press the **Adjust** button one time to enter the trip B screen.
- Hold pressing **Adjust** button for 3 seconds to reset Trip A record.



- In Trip B screen. Press the **Adjust** button one time to enter the Max. record screen.
- Hold pressing **Adjust** button for 3 seconds to reset Trip B record.



- In Max. record screen. Press the **Adjust** button one time to go back to the main screen (ODO).
- Hold pressing **Adjust** button for 3 seconds to reset Max. record.



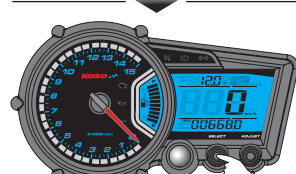
- Press the **Select** button one time, to switch between the water temperature and oil temperature screen.



### 3-6 Main function switch instruction(Select button)



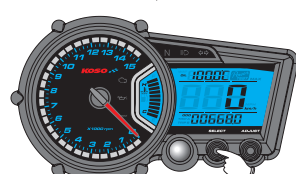
- In the clock+fuel level screen, press the **Select** button one time to enter the volt+fuel level screen.



- In the volt+fuel level screen, press the **Select** button one time to enter the water temperature+fuel level screen.

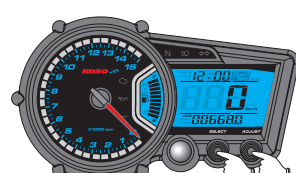


- In the water temperature+fuel level screen, press the **Select** button one time to enter the oil temperature+water temperature level screen.



- In the oil temperature+water temperature level screen, press the **Select** button one time to go back to the clock+fuel level screen.

### 3-7 The power test screen instruction (Select+Adjust button)



- In main screen, press the Select+Adjust button one time to enter the power test screen.



#### Power TEST Target speed timer test

**WARNING!** Please use this function at racetrack to avoid traffic accidents.

In power test screen, press the **Select** button one time to enter the target speed timer test screen.

**NOTE** Please start the test when the bike stops.

**WARNING!** If you have the power test record, it will display the record first. You must clear the record before starting a new test.



Press the **Adjust** button to clear the record and enter the target speed timer test screen.

EX. Now you could see the record you have before. It displays the target speed timer setting as 0~110 km/h, the test result: 19"20 seconds. The top speed is 110 km/h during the test. The MAX RPM is 10,000 RPM during the test.

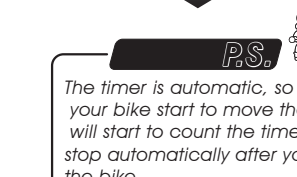
**NOTE** If you just want to check the record, you could hold down the **Select** button for 3 seconds to back to the main screen.



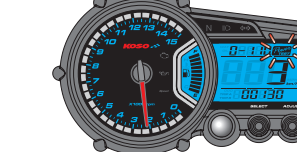
When the bike moves, the timer will start automatically.

**WARNING!** Now the **PS** is flashing!

**NOTE** About the power test setting, please check 4-7.



The timer is automatic, so when your bike start to move the timer will start to count the time and stop automatically after you stops the bike.

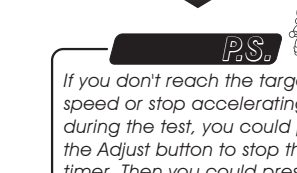


**WARNING!** During the test, the **PS** will keep flashing!

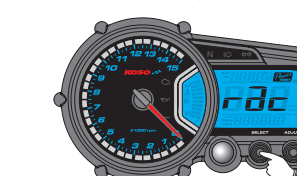


When you reach the target speed you set (0~110 km/h), the timer will stop counting (19"20 second).

**NOTE** If you just want to use the function one time, hold down the **Select** button for 3 seconds to save the records and back to the main screen. If you want to test it again, press the **Adjust** button to clear the record and enter the target speed timer test screen again.



If you don't reach the target speed or stop accelerating during the test, you could press the **Adjust** button to stop the timer. Then you could press the **Adjust** button one time to clear the record and enter the target speed timer test screen.



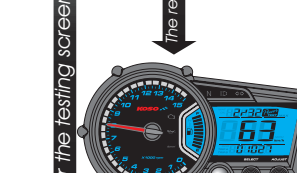
#### Power TEST Target distance timer test

**WARNING!** Please use this function at racetrack to avoid traffic accidents.

In power test screen, press the **Select** button 2 times to enter the target distance timer test screen.

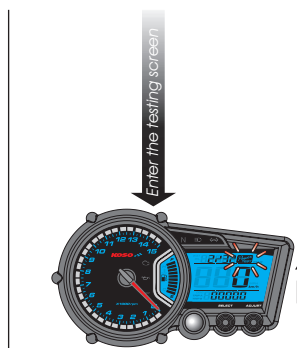
**NOTE** Please start the test when the bike stops.

**WARNING!** If you have the power test record, it will display the record first. You must clear the record before starting a new test.



Press the **Adjust** button to clear the record and enter the target distance timer test screen. EX. Now you could see the record you have before. It displays the target speed timer setting as 2/32 mile (100 M), the test result: 10"27 seconds. The top speed is 63 km/h during the test. The MAX RPM is 8,000 RPM during the test.

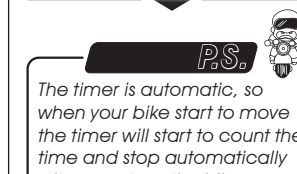
**NOTE** If you just want to check the record, you could hold down the **Select** button for 3 seconds to back to the main screen.



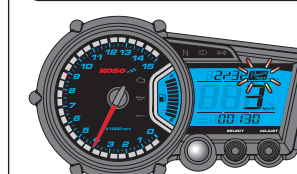
When the bike moves, the timer will start automatically.

**WARNING!** Now the **PS** is flashing!

**NOTE** About the power test setting, please check 4-7.



The timer is automatic, so when your bike start to move the timer will start to count the time and stop automatically after you stops the bike.



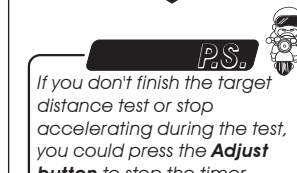
**WARNING!** During the test, the **PS** will keep flashing!



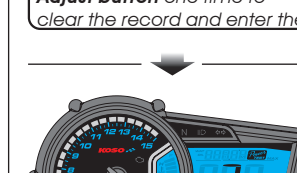
When you reach the target distance you set (100 M . 2/32 mile), the timer will stop counting (10"27 second).

**NOTE** If you just want to use the function one time, hold down the **Select** button for 3 seconds to save the records and back to the main screen.

If you want to test it again, press the **Adjust** button to clear the record and enter the target speed timer test screen again.



If you don't finish the target distance test or stop accelerating during the test, you could press the **Adjust** button to stop the timer. Then you could press the **Adjust** button one time to clear the record and enter the target distance timer test screen.



#### Power TEST The top speed test

**WARNING!** Please use this function at racetrack to avoid traffic accidents.

In power test screen, press the **Select** button 3 times to enter the top speed test screen.

**NOTE** Please start the test when the bike stops.

**WARNING!** If you have the power test record, it will display the record first. You must clear the record before starting a new test.



Press the **Adjust** button to clear the record and enter the top speed test screen. EX. Now you could see the record you have before. It displays the top speed is 180 km/h, the distance to reach the top speed is 510 M, The MAX RPM is 10,000 RPM during the test, the time you need to reach the top speed is 10"20 seconds.

**NOTE** If you just want to check the record, you could hold down the **Select** button for 3 seconds to back to the main screen.



### 3-3 The button function instruction

#### Press the Select button

1. In main screen, press the Select button to choose the display of clock, volt, water temperature or oil temperature.
2. In power test screen, press the Select button to choose the function you want to use.
3. In setting screen, press the Select to choose the function you want to set.
4. When the meter is off, press the Select button to wake up the clock and the perpetual calendar.

#### Hold pressing the Select button for 3 seconds

1. In power test screen, hold pressing the Select button for 3 seconds to back to the main screen.
2. In setting screen, hold pressing the Select button for 3 seconds to back to the main screen.

#### Press the Adjust button

1. In main screen, press the Adjust button to choose the display of odometer, trip A, trip B or the MAX record.
2. In power test screen, press the Adjust button to reset the record, stop the testing, or restart the test.
3. In setting screen, press the Adjust button to make the number setting. If you keep pressing down the Adjust button the setting number will increase fast.
4. When the meter is off, press the Adjust button to wake up the clock and the perpetual calendar.

#### Hold pressing the Adjust button for 3 seconds

1. In main screen, hold pressing the Adjust button for 3 seconds to reset the trip A, trip B, or the MAX record.

#### Hold pressing the Adjust button

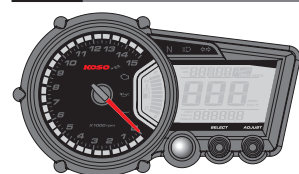
1. In setting screen, to add the setting value fast.

#### Hold pressing the Select+Adjust for 3 seconds

1. In main screen, hold pressing the Select & Adjust buttons at the same time for 3 seconds to enter the setting screen.

**CAUTION!** For safety reason - you could adjust the setting or operate the function only when the vehicle is stop.

### 3-4 Stand by function instruction

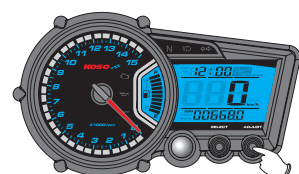


- When the meter is off, press **Adjust** or **Select** button to wake up the clock and the perpetual calendar.



- The clock will display 30 seconds after wake up.
- If Calendar Function is set to "OFF", then only the Clock will be displayed.

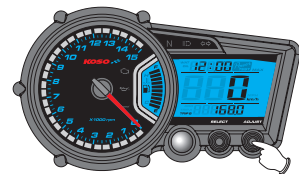
### 3-5 Main function switch instruction(Adjust button)



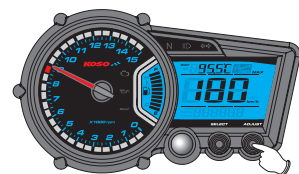
- In main screen (ODO). Press the **Adjust** button one time to enter the Trip A screen.



- In Trip A screen. Press the **Adjust** button one time to enter the trip B screen.
- Hold pressing **Adjust** button for 3 seconds to reset Trip A record.



- In Trip B screen. Press the **Adjust** button one time to enter the Max. record screen.
- Hold pressing **Adjust** button for 3 seconds to reset Trip B record.



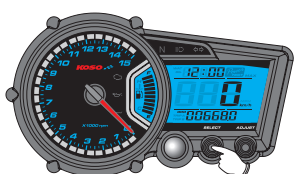
- In Max. record screen. Press the **Adjust** button one time to go back to the main screen (ODO).

- Hold pressing **Adjust** button for 3 seconds to reset Max. record.

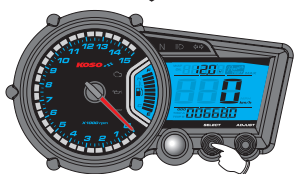
- Press the **Select** button one time, to switch between the water temperature and oil temperature screen.



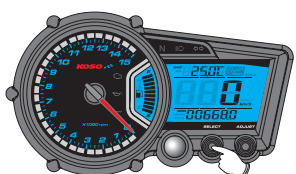
### 3-6 Main function switch instruction(Select button)



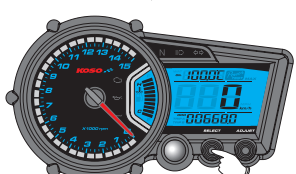
- In the clock+fuel level screen, press the **Select** Button one time to enter the volt+fuel level screen.



- In the volt+fuel level screen, press the **Select** Button one time to enter the water temperature+fuel level screen.

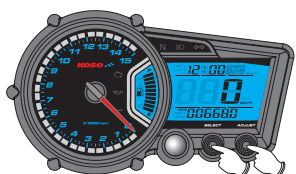


- In the water temperature+fuel level screen, press the **Select** Button one time to enter the oil temperature+water temperature level screen.

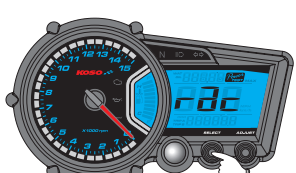


- In the oil temperature+water temperature level screen, press the **Select** Button one time to go back to the clock+fuel level screen.

### 3-7 The power test screen instruction (Select+Adjust button)



- In main screen, press the Select+Adjust button one time to enter the power test screen.



#### Power TEST Target speed timer test

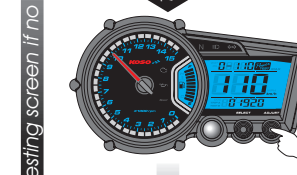
##### WARNING!

Please use this function at racetrack to avoid traffic accidents.

In power test screen, press the **Select** button one time to enter the target speed timer test screen.

**NOTE** Please start the test when the bike stops.

⚠ If you have the power test record, it will display the record first. You must clear the record before starting a new test.



Press the **Adjust** button to clear the record and enter the target speed timer test screen.

EX. Now you could see the record you have before. It displays the target speed timer setting as 0~110 km/h, the test result: 19"20 seconds. The top speed is 110 km/h during the test. The MAX RPM is 10,000 RPM during the test.

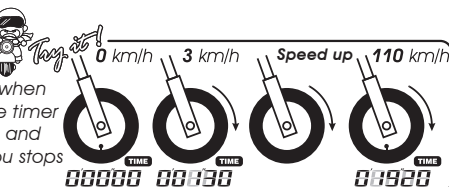
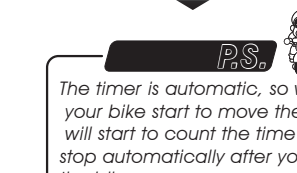
⚠ If you just want to check the record, you could hold down the **Select** button for 3 seconds to back to the main screen.



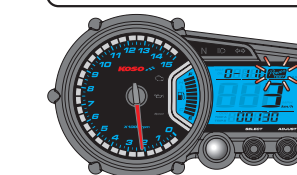
When the bike moves, the timer will start automatically.

⚠ Now the **Power** is flashing!

**NOTE** About the power test setting, please check 4-7.

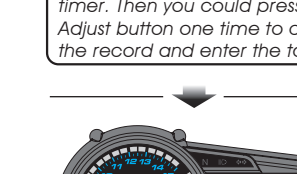
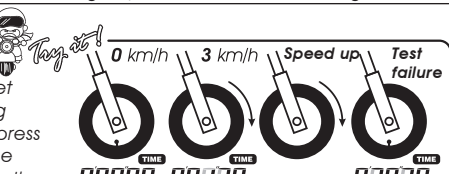
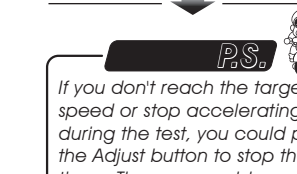


⚠ During the test, the **Power** will keep flashing!



When you reach the target speed you set (0~110 km/h), the timer will stop counting (19"20 second).

⚠ If you just want to use the function one time, hold down the **Select** button for 3 seconds to save the records and back to the main screen. If you want to test it again, press the **Adjust** button to clear the record and enter the target speed timer test screen again.



If you don't reach the target speed or stop accelerating during the test, you could press the Adjust button to stop the timer. Then you could press the Adjust button one time to clear the record and enter the target speed timer test screen.



#### Power TEST Target distance timer test

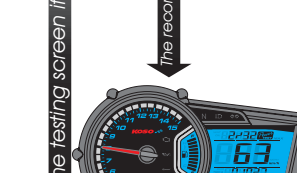
##### WARNING!

Please use this function at racetrack to avoid traffic accidents.

In power test screen, press the **Select** button 2 times to enter the target distance timer test screen.

**NOTE** Please start the test when the bike stops.

⚠ If you have the power test record, it will display the record first. You must clear the record before starting a new test.



Press the **Adjust** button to clear the record and enter the target distance timer test screen. EX. Now you could see the record you have before. It displays the target speed timer setting as 2/32 mile (100 M), the test result: 10"27 seconds. The top speed is 63 km/h during the test., The MAX RPM is 8,000 RPM during the test.

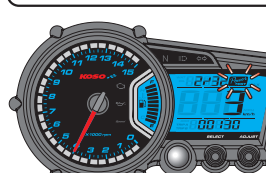
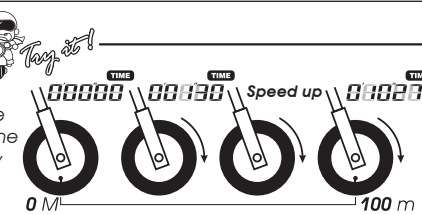
⚠ If you just want to check the record, you could hold down the **Select** button for 3 seconds to back to the main screen.



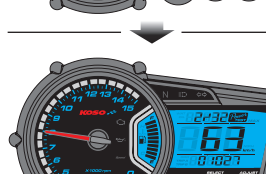
When the bike moves, the timer will start automatically.

⚠ Now the **Power** is flashing!

**NOTE** About the power test setting, please check 4-7.



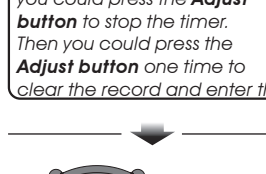
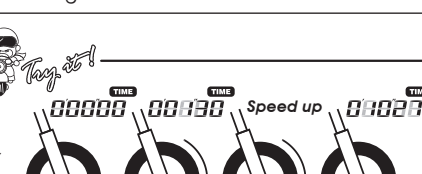
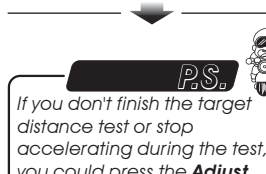
⚠ During the test, the **Power** will keep flashing!



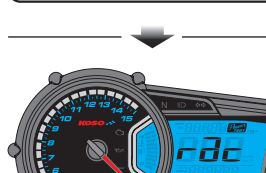
When you reach the target distance you set (100 M . 2/32 mile), the timer will stop counting (10"27 second).

⚠ If you just want to use the function one time, hold down the **Select** button for 3 seconds to save the records and back to the main screen.

If you want to test it again, press the **Adjust** button to clear the record and enter the target speed timer test screen again.



If you don't finish the target distance test or stop accelerating during the test, you could press the **Adjust** button to stop the timer. Then you could press the **Adjust** button one time to clear the record and enter the target distance timer test screen.



#### Power TEST The top speed test

##### WARNING!

Please use this function at racetrack to avoid traffic accidents.

In power test screen, press the **Select** button 3 times to enter the top speed test screen.

**NOTE** Please start the test when the bike stops.

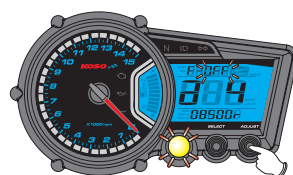
⚠ If you have the power test record, it will display the record first. You must clear the record before starting a new test.



Press the **Adjust** button to clear the record and enter the top speed test screen. EX. Now you could see the record you have before. It displays the top speed is 180 km/h, the distance to reach the top speed is 510 M, The MAX RPM is 10,000 RPM during the test, the time you need to reach the top speed is 10"20 seconds.

⚠ If you just want to check the record, you could hold down the **Select** button for 3 seconds to back to the main screen.





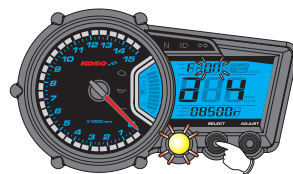
●EX. To set F-ON (Flashing ON) for Yellow shift light warning method.

●Press the **Adjust** button to change the setting value.



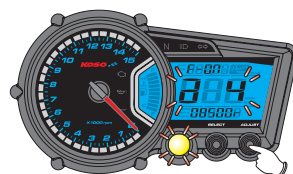
Light on

Flash



●Press the **Select** button one time to go back to the a4 screen.

●EX. Now the yellow shift light warning method is setting form F-OFF to F-ON.

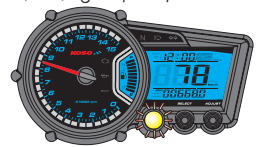


●Press the **Adjust** button one time to enter the over heat warning (Water temperature) setting screen.

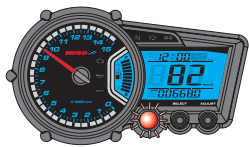
⚠ Now the a4 is flashing!



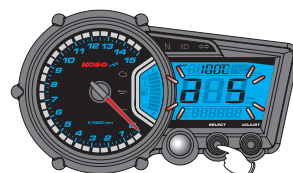
If you set the RPM yellow shift light at 8,500 RPM, the red shift light will light on at 9,500, light up sequent as below!



yellow shift light(8,500 RPM)



red shift light(9,500 RPM)



#### 4-5 Over heat warning setting (water temperature)

●EX. The over heat warning set on 105°C.

●Press the **Select** button to move to the digit you want to set.



●Press the **Adjust** button to change the setting.



**Note** Setting range: 60~120°C

(140~248°F)

Setting unit: 1°C (°F)



●Press the **Select** button one time to go back to the a5 screen.

●EX. Now the over heat warning (water temperature) is setting form 100°C to 105°C.

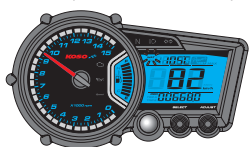
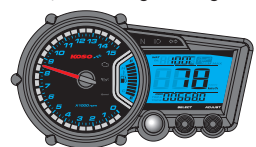


●Press the **Adjust** button one time to enter the over heat warning (oil temperature) setting screen.

⚠ Now the a5 is flashing!



The temperature light will light on when the temperature reached your setting.



#### 4-6 Over heat warning setting (oil temperature)

●EX. The over heat warning set on 105°C.

●Press the **Select** button to move to the digit you want to set.



●Press the **Adjust** button to change the setting.



**Note** Setting range: 60~120°C

(140~248°F)

Setting unit: 1°C (°F)



●Press the **Select** button one time to go back to the a6 screen.

●EX. Now the over heat warning (oil temperature) is setting form 100°C to 105°C.

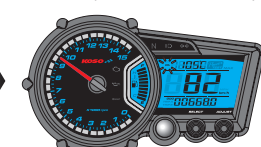


●Press the **Adjust** button one time to enter the target speed timer setting screen.

⚠ Now the a6 is flashing!



The temperature light will light on when the temperature reached your setting.



#### 4-7 The target speed timer / target distance timer setting

●EX. If the target speed timer is setting 0~110 km/h.

●Press the **Select** button to move to the digit you want to set.

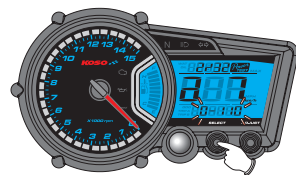
●Press the **Adjust** button to change the setting.



**Note** Setting range: 30~360 km/h

(20~220 MPH)

Setting unit: 5 km/h (MPH)



●EX. If the target distance timer is setting 500 M (10/32 mile).

●Press the **Select** button to move to the digit you want to set.

●Press the **Adjust** button to change the setting.



**Note** Setting range: 50~1,500 M

(50~1,500 M)

Setting unit: 50 M (50 M)



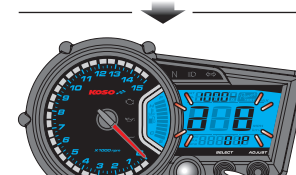
●Press the **Select** button one time to go back to the a7 screen.

●EX. Now the target speed timer is setting form 0~50 km/h to 0~110 km/h ; The target distance timer is setting form 2/32 mile to 10/32 mile.



●Press the **Adjust** button one time to enter the Tire circumference and sensor point setting screen.

⚠ Now the a7 is flashing!



#### 4-8 Tire circumference and sensor point

●EX. If the circumference is setting 1,300 mm.

●Press the **Select** button one time to enter the circumference setting screen.

●Press the **Select** button to move to the digit you want to set.



●Press the **Adjust** button to change the setting.

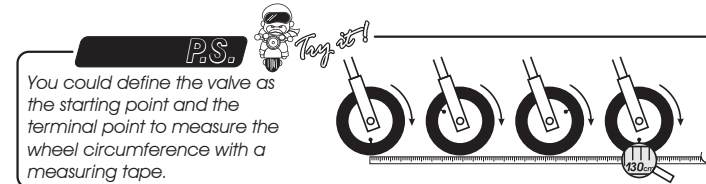


**Note** Setting range: 300~2500.

Setting unit: per 1 %.

#### CAUTION!

- Please measure the tire circumference (The tire you will install the sensor on) and make sure the number of magnet sensor point (You could install the magnet into the disc screw or the sprocket screw.)
- The speed displayed on the meter will be affected by the setting, please make sure the setting number is correct before you make the setting.



●EX. If the sensor point is setting 06P.

●Press the **Select** button one time to enter the sensor point setting screen.

●Press the **Select** button to move to the digit you want to set.



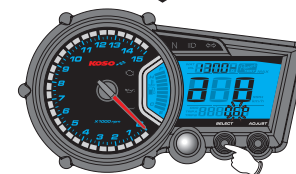
●Press the **Adjust** button to change the setting.



**Note** Setting range: 01P~20P.

Setting unit: 01P.

●EX. Now the circumference is setting from 1,000 to 1,300 mm.



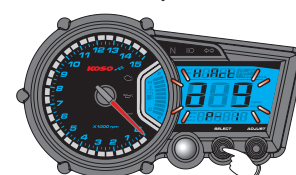
●Press the **Select** button one time to go back to the a8 screen.

●EX. Now the sensor point is setting from 01P to 06P.



●Press the **Adjust** button one time to enter the input pulse setting screen.

⚠ Now the a8 is flashing!



#### 4-9 The RPM input signal setting

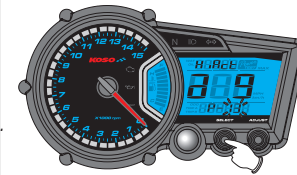
●EX. You want to connect the RPM signal wire to the pick up signal and there are 13 flywheel signals per turn.

●Press the **Select** button one time to enter the RPM input signal setting screen.

●Press the **Adjust** button to change the setting.



**Note** Setting range: 0.5, 1~24.



●EX. We want to change the setting to Lo.

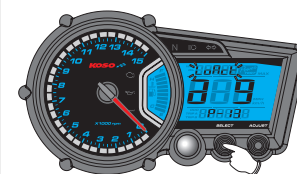
●Press the **Select** button one time to enter the waveforms setting screen.

●Press the **Adjust** button to change the setting.

**Note** We define the RPM input pulse as Hi (The positive pulse) & Lo (The negative pulse.)

**Note** If the RPM displayed on the meter is incorrect or with noise, please choose another setting and try it again.

●EX. Now the RPM input signal number setting is changed from 1 to 13.



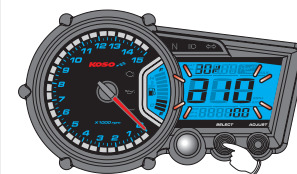
●Press the **Select** button one time to go back to the a9 screen.

●EX. Now the input pulse setting changed from is Hi to Lo.



●Press the **Adjust** button one time to enter the fuel resistance setting screen.

⚠ Now the a9 is flashing!



#### 4-10 The fuel gauge resistance and insufficient fuel warning setting

●EX. The fuel gauge need to be set to 510Ω.

●Press the **Select** button one time to enter the fuel resistance setting screen.

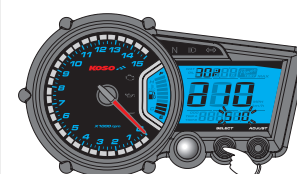
●Press the **Adjust** button to change the setting.



**Note** The fuel gauge resistance setting range: 100Ω, 250Ω, 510Ω, 1200Ω, SW (turn off).

If Fuel Setting is set to "SW", then the value setting for this function will be skipped.

**Note** When Fuel Setting is set to "SW", the fuel level symbol will light up when fuel level signal wire connected to the (-)



●EX. The insufficient fuel warning need to be set to 50%.

●Press the **Select** button one time to enter the insufficient fuel warning setting screen.

●Press the **Adjust** button to change the setting.



**Note** Setting range: 10%~50%.

●EX. The setting is changed from 100Ω to 510Ω.



●Press the **Select** button one time to go back to the a10 screen.

●EX. The setting is changed from 30% to 50%.



●Press the **Adjust** button one time to enter the clock setting screen.

⚠ Now the a10 is flashing!



#### 4-11 The clock setting

- EX. We would like to set the clock at 0:05.
- Press the **Select button** one time to enter the clock setting screen.
- Press the **Select button** to move to the digit you want to set.
- Press the **Adjust button** to change the setting.

**Note** This is a 24 H clock.

- Press the **Select button** one time to go back to the a11 screen.
- EX. Now the clock is setting from 0:00 to 0:05.

- Press the **Adjust button** one time to enter the perpetual calendar setting screen.

⚠ Now the a11 is flashing!

#### 4-12 Perpetual calendar setting

- Press the **Select button** one time to enter the perpetual calendar setting screen.
- Press the **Adjust button** to change the setting.

turn on      turn off

- EX. You want to set the perpetual calendar at 2013.
- Press the **Select button** one time to enter the perpetual calendar (CE) setting screen.
- Press the **Adjust button** to change the setting.

**Note** Setting range: 2000~2099.

- EX. You want to set the perpetual calendar at 05-06.1.
- Press the **Select button** one time to enter the perpetual calendar (month) setting screen.
- Press the **Adjust button** to change the setting.

05-06.1 → 05-06.1

- Press the **Select button** one time to enter the perpetual calendar (day) setting screen.
- Press the **Adjust button** to change the setting.

05-06.1 → 05-06.1

- Press the **Select button** one time to go back to the a12 screen.
- EX. The setting is changed from 01-01.2 to 05-06.1.

- Press the **Adjust button** one time to enter the backlight brightness setting screen.

⚠ Now the a12 is flashing!

#### 4-13 The backlight brightness & color setting

- EX. We would like to change the brightness to 3-5 (60% brightness.)
- Press the **Select button** one time to enter the backlight brightness setting screen.
- Press the **Adjust button** to change the setting.

000000 → 003-5

**Note** Setting range: 1-5 (Darkest) ~ 5-5 (Brightest), 5 different levels for choosing.  
Setting unit: 20% per level.  
**The backlight brightness will change immediately after you adjust the setting value.**

- Press the **Select button** one time to enter the backlight color setting screen.
- Press the **Adjust button** to change the setting.

**Note** Setting color screen:  
C-rE (Red), C-Or (Orange),  
C-YE (Yellow), C-Gr (Green),  
C-bl (Blue), C-ln (Light blue),  
C-Pu (Purple), C-W (White).  
When setting value changed, the backlight color will also changed. If set to "C-EH", you need to use the high/low beam switch to adjust the backlight color.

- Press the **Select button** one time to go back to the a13 screen.

- Press the **Adjust button** one time to enter the internal odometer display screen.

⚠ Now the a13 is flashing!

#### 4-14 Internal odometer display

- Press the **Adjust button** one time to enter the external odometer setting screen.
- EX. The internal odometer display is 12500 km.

#### 4-15 External odometer setting

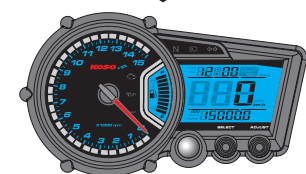
- EX. We would like to set the external odometer to 15000.0 km.
- Press the **Select button** one time to enter the external odometer setting screen.
- Press the **Select button** to move to the digit you want to set.
- Press the **Adjust button** to change the setting.

- Press the **Select button** one time to go back to the a15 screen.
- EX. The external odometer setting is changed from 7750.0 to 15000.0 km.



- Press the **Adjust button** one time to go back to the main screen.

⚠ Now the a15 is flashing!



Main screen.

### 5 Trouble shooting

The following situation do not indicate malfunction of the meter. Please check the following before taking it in for repair.

Trouble	Check item
The meter doesn't work when the power is on.	<ul style="list-style-type: none"> <li>●The power doesn't supply to the meter. <ul style="list-style-type: none"> <li>→Please make sure the wiring is connected. The wiring and fuse are not broken.</li> <li>→The battery is broken or the battery is too old to supply enough power <b>DC 12V</b> to make the meter work.</li> </ul> </li> </ul>
The meter shows wrong information.	<ul style="list-style-type: none"> <li>●Please check the voltage of your battery, and make sure the voltage is over DC12V.</li> </ul>
Speed does not appear or appear incorrectly.	<ul style="list-style-type: none"> <li>●Please make sure the speed sensor is connected correctly.</li> <li>●Please check the tire-size setting. <ul style="list-style-type: none"> <li>→please refer to the manual 4-8.</li> </ul> </li> </ul>
Tachometer does not appear or appear incorrectly.	<ul style="list-style-type: none"> <li>●Please check the RPM sensor wiring is connected correctly.</li> <li>●Please check the spark plug is "R" type or not. If not, please replace the spark plug with the "R" type spark plug.</li> <li>●Please check your setting. <ul style="list-style-type: none"> <li>→Please refer to the manual 4-9.</li> </ul> </li> </ul>
Fuel gauge does not appear or appear incorrectly.	<ul style="list-style-type: none"> <li>●Please check your fuel tank. <ul style="list-style-type: none"> <li>→Is there any fuel inside?</li> </ul> </li> <li>●Please check the wiring. <ul style="list-style-type: none"> <li>→Do you connect the wiring correctly?</li> </ul> </li> <li>●Please check the setting. <ul style="list-style-type: none"> <li>→Please refer to the manual 4-10.</li> </ul> </li> </ul>
Temp does not appear or appear incorrectly.	<ul style="list-style-type: none"> <li>●Please check the sensor. <ul style="list-style-type: none"> <li>→Does the wiring break or falling off?</li> </ul> </li> <li>●Do you connect the wiring correctly. <ul style="list-style-type: none"> <li>→Please check the positive wire (Red) connects to the battery, and main switch positive wiring (Brown) connects to the main switch.</li> </ul> </li> </ul>

※If still can't solve the problems according to the steps above, please contact with distributors or us.