



THANK YOU FOR PURCHASING "KOSO EGT METER",LED NIGHT-BACK-LIGHTED,MULTI-FUNCTION IN ONE. EASY-WIRING. CLEAR-CONTROLLING AND EASY-USING.

## ATTENTION

- 1.THE LCD METER IS APPLY FOR DC12V ONLY.
- 2.EFFECTIVE RANGE : 100°C~1200°C (250°F~2100°F) .
- 3.FOR INSTALLATION, PLEASE FOLLOW THE STEPS DESCRIBED IN MANUAL. ANY DAMAGE CAUSED BY WRONG INSTALLATION SHALL BE IMPUTED TO THE USERS.
- 4.DO NOT DISASSEMBLE OR CHANGE ANY PARTS EXCLUDING THE MANUAL DESCRIPTION.
- 5.THE INTERIOR EXAMINATION OR MAINTENANCE SHOULD BE EXECUTED BY OUR PROFESSIONALS.

### MARK MEANING

**NOTE** YOU COULD GET THE INSTALLATION DETAILS FROM THE INFORMATION BEHIND THE MARK.

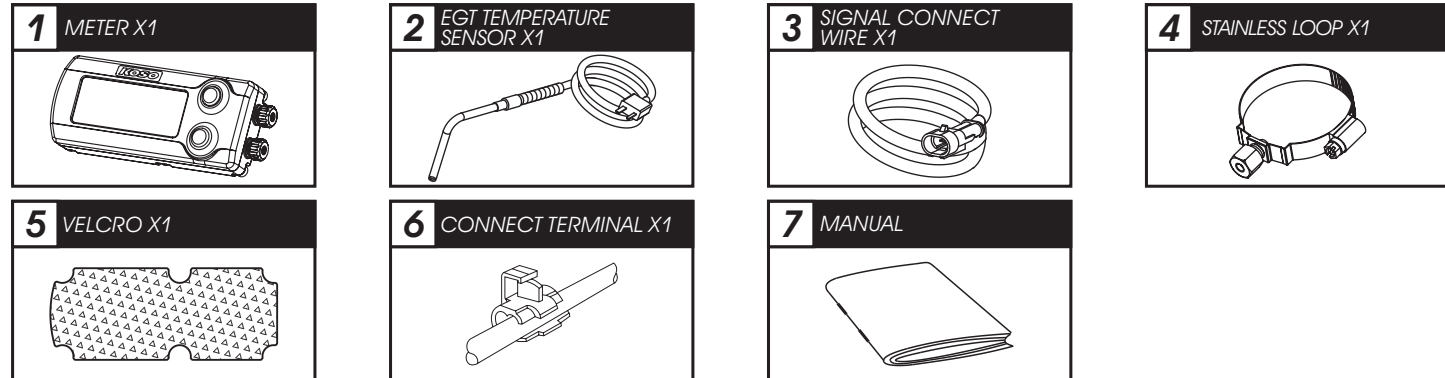
**△ SOME PROCESSES MUST BE FOLLOWED TO AVOID THE AFFECTION CAUSED BY WRONG INSTALLATION.**

**△ WARNING! SOME PROCESSES MUST BE FOLLOWED TO AVOID DAMAGES TO YOURSELF OR THE PUBLIC.**

**△ CAUTION! SOME PROCESSES MUST BE FOLLOWED TO AVOID THE DAMAGE TO THE VEHICLE.**

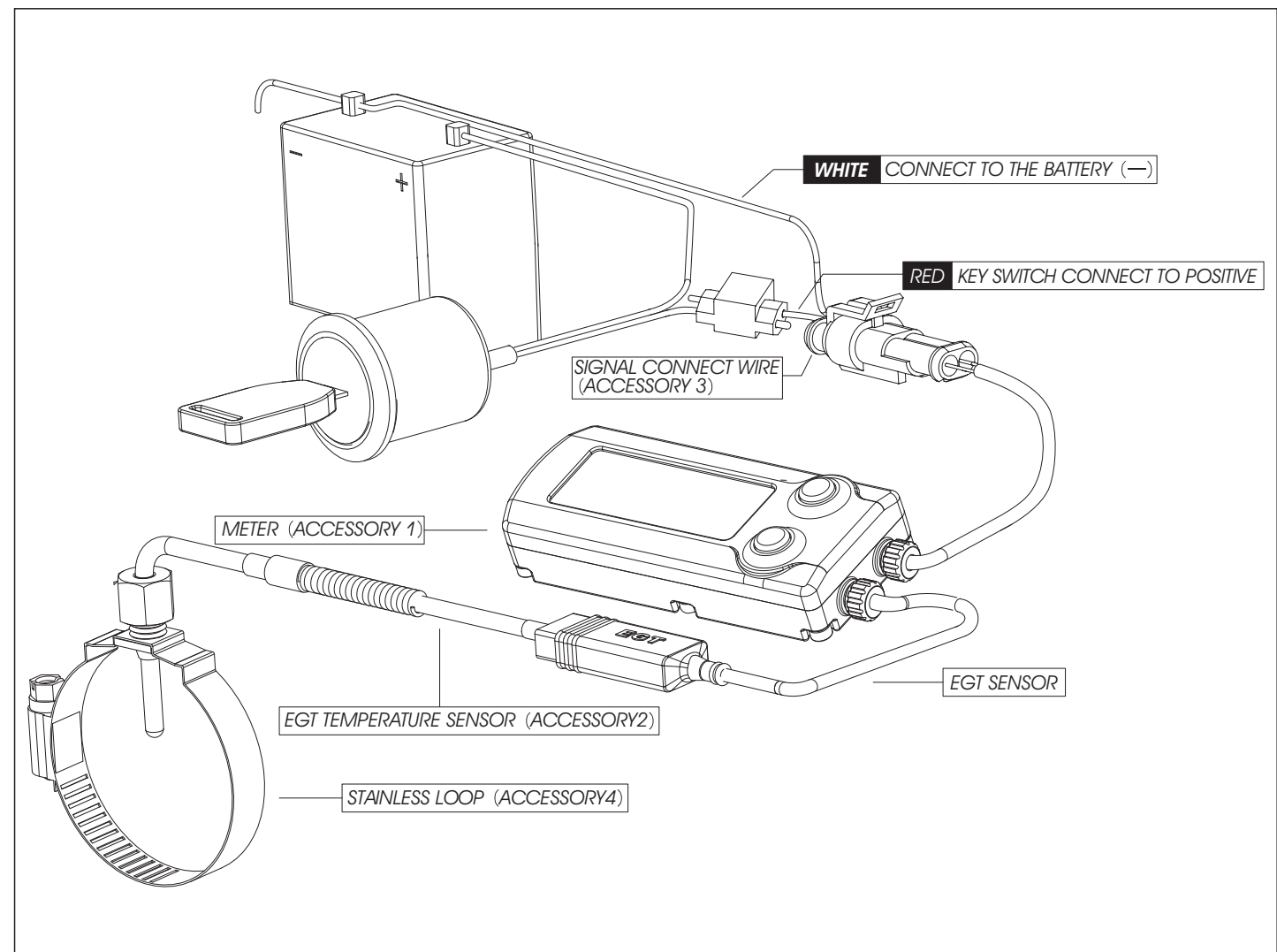


## 1 ACCESSORY

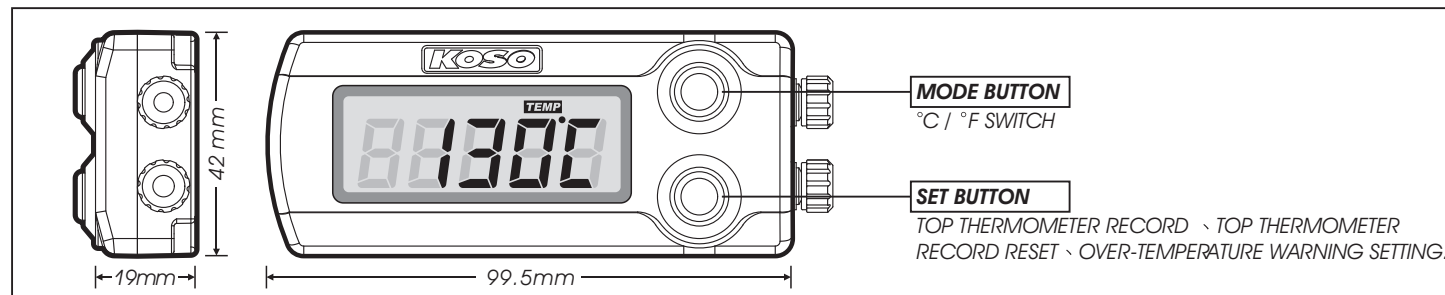


PS: PLEASE CONTACT US IF THE ITEMS YOU OPEN ARE NOT THE SAME, WITH THE ABOVE-LISTED ONES.

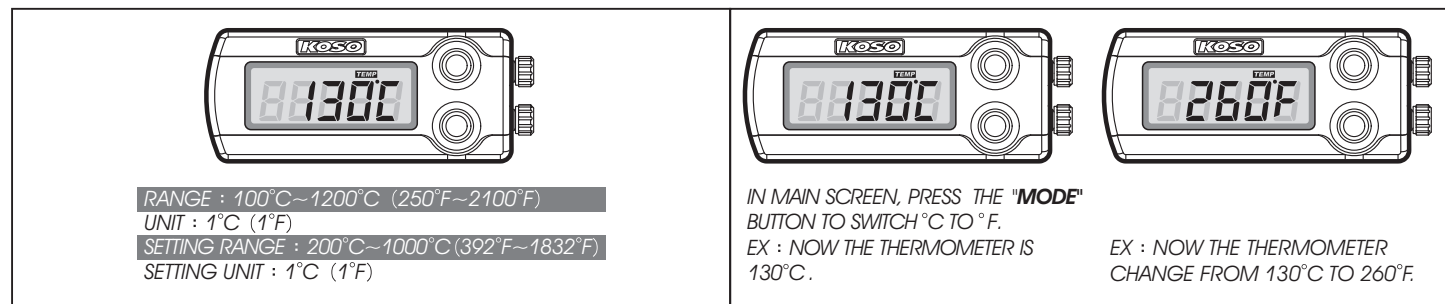
## 2 INSTRUCTION OF WIRING-INSTALLATION



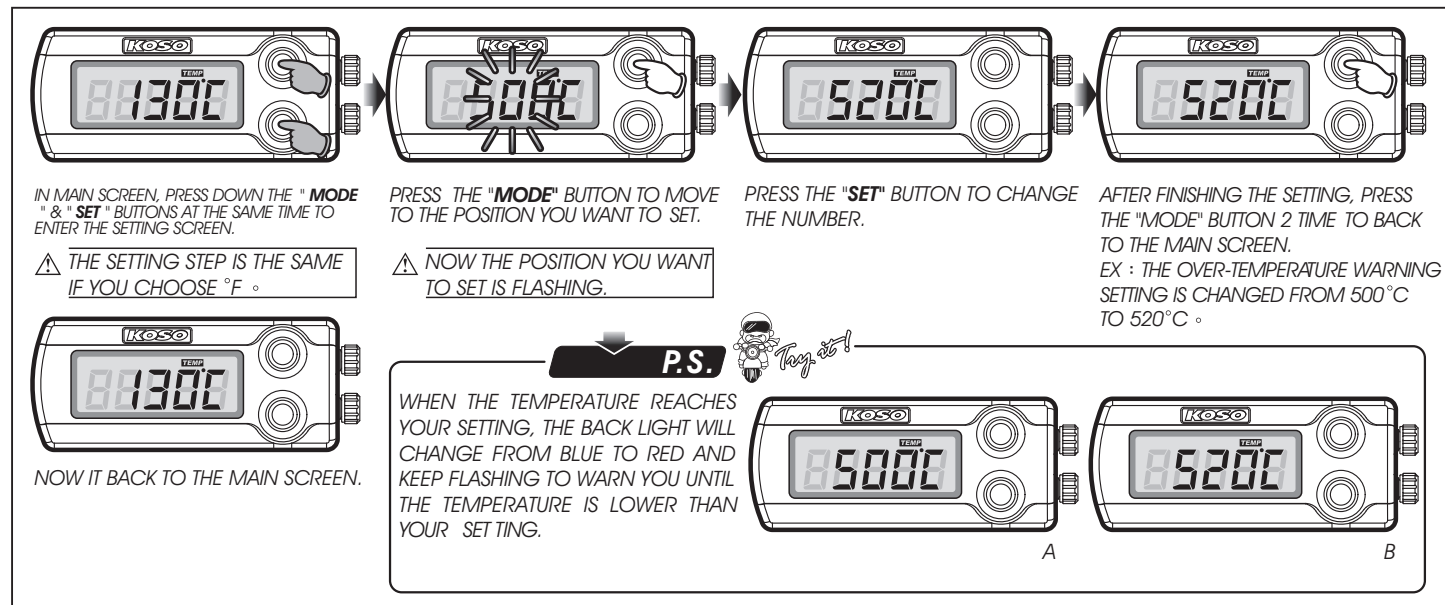
## 3 THE METER SIZE INSTRUCTION.



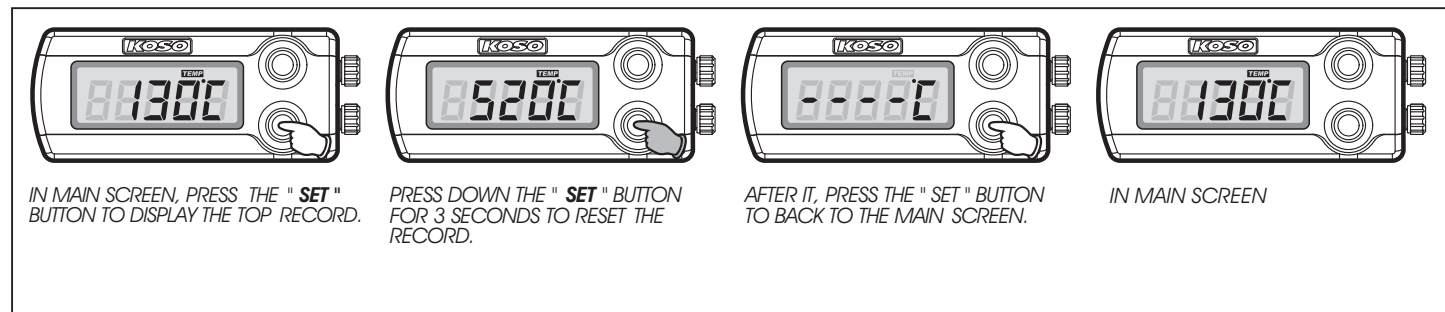
## 4 BASIC FUNCTION.



## 6 OVER-TEMPERATURE WARNING SETTING INSTRUCTION.



## 7 THE TOP RECORD DISPLAY AND RESET.



## 8 TROUBLE SHOOTING.

